

UHPC

外墙装饰板产品手册

Wall Exterior Decoration Panel Product Manual



宁波博阳城市运营管理服务有限公司
Ningbo Boyang Urban Operation Management Service Co., Ltd.

1.Product Introduction:

The application of UHPC panels in curtain wall systems is first evident in their design capabilities. UHPC materials possess excellent plasticity, enabling the creation of complex and varied shapes and textures that fulfill architects' pursuit of personalized designs. By customizing unique textures, colors, and forms, UHPC curtain wall panels can exhibit a mirror-like smooth finish or natural textures resembling stone or wood, adding distinctive charm to building exteriors. In commercial structures such as shopping malls, office buildings, hotels, and resorts, UHPC curtain wall panels have become the preferred material for achieving modern, high-quality architectural appearances due to their exceptional aesthetic appeal.

Beyond aesthetic appeal, the innovative application of UHPC panels in curtain wall systems is also reflected in their enhanced functionality. UHPC curtain wall panels exhibit exceptional thermal insulation performance, helping to reduce energy consumption for air conditioning and heating while improving a building's energy efficiency. In public facilities such as the Yuhang Theatre, their thermal insulation effectively lowers energy usage and enhances the audience experience. Additionally, their outstanding durability and water resistance ensure long-term preservation of the building's aesthetics and performance, reducing maintenance costs. In the fields of green architecture and eco-friendly housing, UHPC curtain wall panels—representing a key application of UHPC materials—demonstrate immense potential.

2.Product superiority:

Install the wall stud brackets, then secure the panels with anchoring fasteners. After adjusting the flatness, tighten the fasteners. The entire process is fully mechanized, enabling faster construction timelines and improved wall renovation efficiency.

The product features lightweight yet high strength, with its molecular-level dense structure providing resistance to ultraviolet aging and extreme cold conditions, significantly extending the service life of walls.

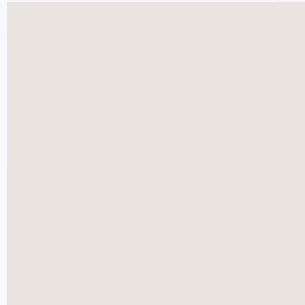
Inorganic materials exhibit strong weather resistance and do not fade easily, ensuring the walls maintain their attractive appearance over time.

3.Product Style:

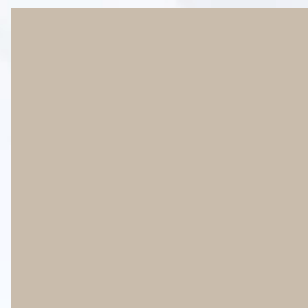
Solid Color Series:



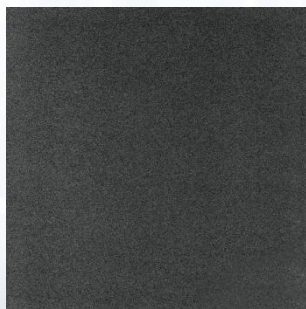
Clear Board



frosty



Warm Rice



Mountain Ash



Sesame Light Gray



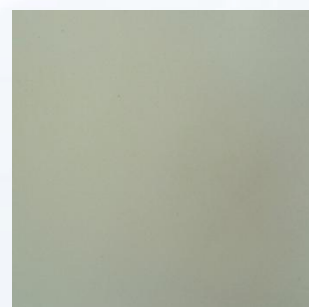
amber



Cherry Blossom Pink

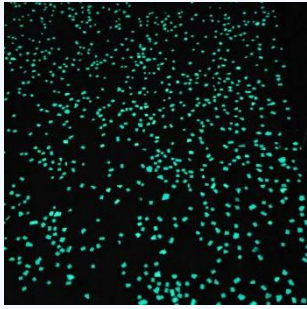


Smog Blue



mint green

Special Decoration Series:



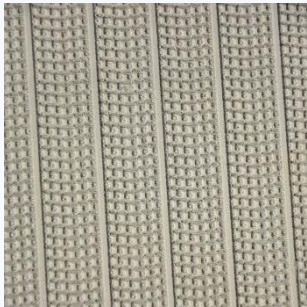
Starboard Board



Ax and Chisel Board



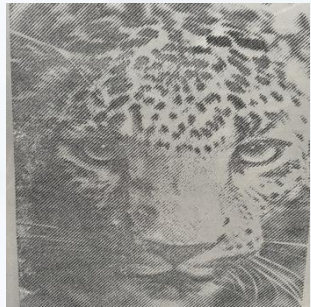
Notch plate



Checkered board



Wave Board



shadow

Stone-like texture:



Green Frost Stone



Sesame White



graphite



Marble rock



Mongolian Black



China Black

4. Size of product:

Dimensions:400*200mm 、 600*600mm 、 300*600mm 、 600*1200mm ,
Thickness:20-30mm

5.Product Effect:



6.Installation instructions:

- 1.On-site layout and positioning: Based on the construction drawings, accurately mark the lines on the building substrate to establish the reference lines for wall installation and the positioning of each component.
- 2.Pre-embedded post-installed embedded parts: Install the post-installed embedded parts at the specified locations according to the layout markings, ensuring their stability and alignment (horizontal and vertical) meet the specified requirements.
- 3.Install the main keel: Connect and secure the main keel to the rear embedded components, adjust the spacing, vertical alignment, and horizontal level of the keel, and complete the installation and reinforcement of the main keel.

4. Install secondary keels: Based on the main keel, install secondary keels at the specified design intervals, ensuring tight connections between the secondary and main keels for overall structural stability.

5. Install the mounting bracket assembly: Install the mounting bracket at the predetermined position on the secondary keel, verify its installation accuracy, and ensure a secure and tight connection with the keel.

6. Panel installation and fixation: Pre-fix the curtain wall panels with their corresponding mounting hardware, then install the assembled panel-hanger system onto the mounting brackets for initial positioning.

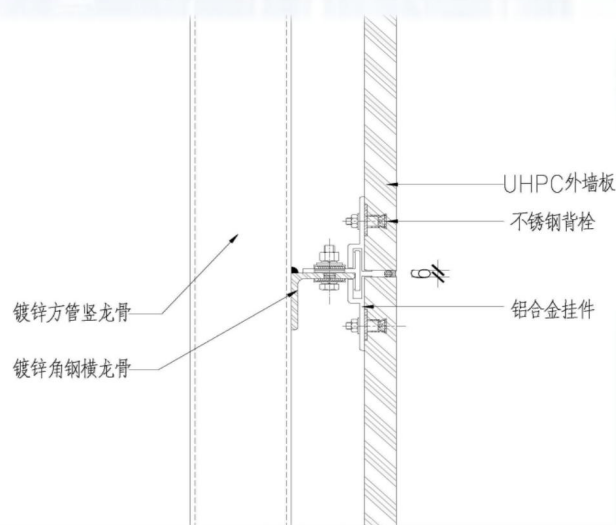
7. Overall leveling and calibration: Perform precise adjustments to the horizontal, vertical alignment, and spacing of the installed curtain wall panels to ensure a smooth surface and uniform gaps, then complete the final fixation.

8. Acceptance and Maintenance Inspection: Verify the secure fixation, visual integrity, and overall coordination of each panel.

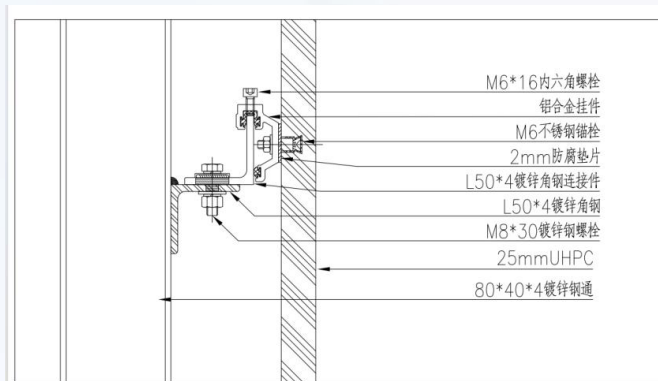
Record the installation data and complete the final acceptance inspection.

Installation example diagram:

Method 1:



Method 2:



UHPC Exterior Wall Construction Case Study:

